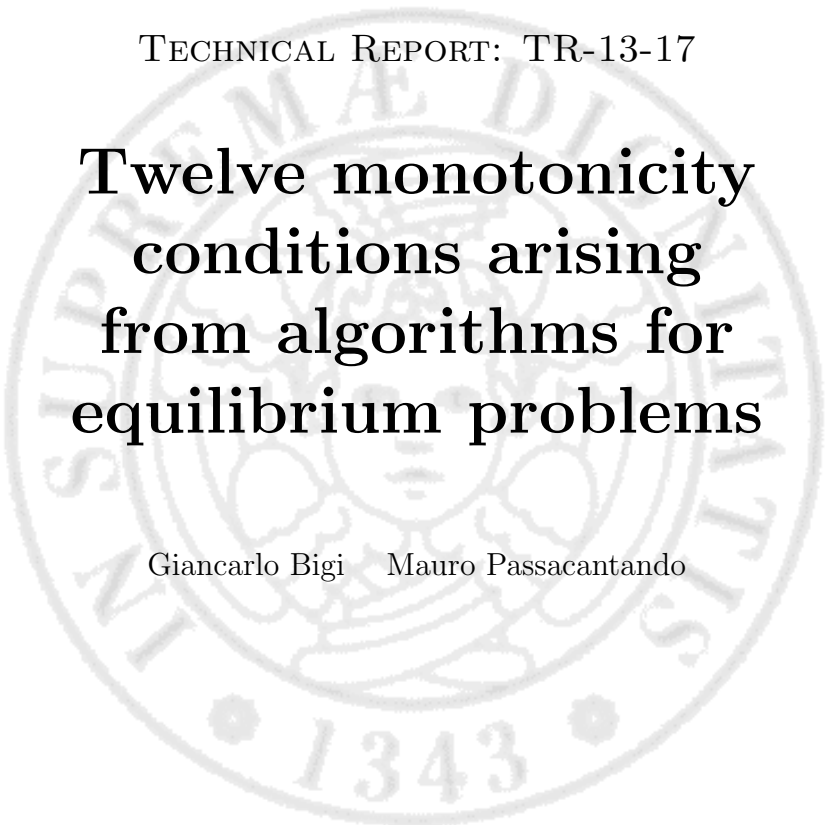


UNIVERSITÀ DI PISA
DIPARTIMENTO DI INFORMATICA

TECHNICAL REPORT: TR-13-17



Twelve monotonicity conditions arising from algorithms for equilibrium problems

Giancarlo Bigi Mauro Passacantando

November 18, 2013

ADDRESS: Largo B. Pontecorvo, 3, 56127 Pisa, Italia.
TEL: +39 050 2212700 FAX: +39 050 2212726

Twelve monotonicity conditions arising from algorithms for equilibrium problems

Giancarlo Bigi^a and Mauro Passacantando^a

^a*Dipartimento di Informatica, Università di Pisa, Largo B. Pontecorvo 3, 56127 Pisa, Italy*

In the last years many solution methods for equilibrium problems (EPs) have been developed. Several different monotonicity conditions have been exploited to prove convergence. The paper investigates all the relationships between them in the framework of the so-called abstract EP. The analysis is further detailed for variational inequalities and linear equilibrium problems, which include also Nash equilibrium problems with quadratic payoffs.

Keywords: equilibrium problems; monotonicity; variational inequalities; Nash equilibria.

AMS Subject Classification: 90C33; 47H05; 90C30

1. Introduction

Many mathematical models, including optimization, multiobjective optimization, variational inequalities, fixed point and complementarity problems, Nash equilibria in noncooperative games and inverse optimization, can be formulated in the same format, namely the *equilibrium problem*

$$\text{find } x^* \in C \text{ s.t. } f(x^*, y) \geq 0, \quad \forall y \in C, \quad (EP)$$

where $C \subset \mathbb{R}^n$ is a nonempty, closed and convex set and $f : \mathbb{R}^n \times \mathbb{R}^n \rightarrow \mathbb{R}$ is a bifunction which satisfies $f(x, x) = 0$ for all $x \in C$ (see, for instance, [7, 8]). This general format clearly stems from variational inequalities, and solution methods for (EP) generally extend those originally designed for optimization or variational inequalities exploiting the underlying common structure.

Algorithms for (EP) can be roughly divided into a few classes (see the survey paper [7]): fixed point, extragradient, convex feasibility and descent methods, which generally require the solution of a sequence of (convex) optimization problems, and proximal point and Tikhonov-Browder regularization methods, which generally require the solution of a sequence of equilibrium problems with better properties than the given one. Almost all these methods share a common feature: convergence is guaranteed under suitable monotonicity assumptions on the bifunction f . This is not really surprising as the monotonicity of the operator is a crucial assumption in the algorithms for variational inequalities (see for instance [12]). Indeed, in equilibrium problems monotonicity plays a role which is similar to convexity in optimization. For instance, stationarity points of gap and D-gap functions for (EP) are actually global minima if appropriate monotonicity conditions hold (see [3–5, 29, 44]).

Several definitions of monotonicity for bifunctions have been introduced. Anyway, to

the best of our knowledge, a thorough study of their relations has never been carried out. Therefore, the paper aims at analysing all the relationships between those monotonicity conditions which are relevant in the algorithms for (EP) . Twelve different conditions have been identified and they are briefly recalled in Section 2, while Section 3 provides a full picture of the relationships between them. Finally, the analysis is further detailed in Section 4 for two particular cases: variational inequalities and the so-called linear equilibrium problems, which include also Nash equilibrium problems with quadratic payoffs.

Since the convexity of $f(x, \cdot)$ is required (for any $x \in C$) by all the algorithms for (EP) and some require also that f is continuously differentiable, both assumptions are taken for granted in the whole paper.

2. Monotonicity conditions

Monotonicity is a straightforward concept for real-valued functions of one single variable: for instance, $g : \mathbb{R} \rightarrow \mathbb{R}$ is monotone increasing on $C \subseteq \mathbb{R}$ if $g(y) \geq g(x)$ holds whenever $x, y \in C$ satisfy $y > x$. The statement

$$(g(y) - g(x))(y - x) \geq 0, \quad \forall x, y \in C,$$

provides an elegant alternative definition, which can be easily extended to vector-valued mappings.

Definition 2.1 $F : \mathbb{R}^n \rightarrow \mathbb{R}^n$ is called *monotone on* $C \subseteq \mathbb{R}^n$ if

$$\langle F(y) - F(x), y - x \rangle \geq 0, \quad \forall x, y \in C, \quad (1)$$

where $\langle \cdot, \cdot \rangle$ denotes the Euclidean scalar product in \mathbb{R}^n . *Strict monotonicity* means that (1) holds replacing \geq by $>$ whenever $y \neq x$, while *strong monotonicity* requires the existence of some $\tau > 0$ such that the left-hand side of (1) is greater or equal to $\tau \|y - x\|^2$.

When (EP) is a variational inequality, i.e. $f(x, y) = \langle F(x), y - x \rangle$ for some operator $F : \mathbb{R}^n \rightarrow \mathbb{R}^n$, the left-hand side of (1) can be rewritten exploiting f :

$$\langle F(y) - F(x), y - x \rangle = -(f(x, y) + f(y, x)).$$

Therefore, monotonicity conditions for a bifunction $f : \mathbb{R}^n \times \mathbb{R}^n \rightarrow \mathbb{R}$ can be introduced relying on this relationship.

Definition 2.2 f is called *monotone on* C if

$$f(x, y) + f(y, x) \leq 0, \quad \forall x, y \in C, \quad (2)$$

while it is called *strictly monotone on* C if (2) holds replacing \leq by $<$ whenever $y \neq x$. f is called *strongly monotone on* C if there exists $\tau > 0$ such that

$$f(x, y) + f(y, x) \leq -\tau \|y - x\|^2, \quad \forall x, y \in C. \quad (3)$$

Strong monotonicity is exploited in those algorithms which are based on the reformulation of (EP) as a fixed point problem [28, 34, 40], while no known algorithm relies directly on the strict monotonicity of f . Both strict and strong monotonicity are rather restrictive assumptions as each of them guarantees the uniqueness of the solution. Therefore, a few

algorithms rely on monotonicity: they belong to the classes of extragradient [38], proximal point [14, 20, 30–33] and Tikhonov-Browder regularization methods [19, 21, 24]. Actually, many efforts have been devoted to further weaken the monotonicity requirements.

Definition 2.3 f is called *pseudomonotone on C* if

$$f(x, y) \geq 0 \implies f(y, x) \leq 0 \quad \forall x, y \in C. \quad (4)$$

f is called *weakly monotone on C* if there exists $\tau > 0$ such that

$$f(x, y) + f(y, x) \leq \tau \|y - x\|^2, \quad \forall x, y \in C. \quad (5)$$

Pseudomonotonicity has been first used in the extragradient algorithms of [13] without naming it so, but exploiting (4) for the points x which solve (EP) . Recently, other extragradient algorithms have been developed exploiting the above definition [1, 36, 39]. Also fixed point [35] and so-called combined relaxation methods [17, 26, 43], which exploit the standard fixed point iteration together with suitable projections, have been developed relying on the pseudomonotonicity of f , as well as convex feasibility [15, 41] and proximal point methods [2, 16, 18, 27]. On the contrary, weak monotonicity has been used in proximal point algorithms only [16, 20, 27].

Regularization methods involve a sequence of equilibrium problems, which have to be solved exploiting other techniques: for instance, descent methods have been exploited in [19, 21, 24] within a regularization framework. Descent methods rely on the reformulation of an equilibrium problem as an optimization problem. Since the objective function is generally nonconvex, appropriate monotonicity conditions are needed to solve them.

Definition 2.4 f is called *∇ -monotone on C* if

$$\langle \nabla_x f(x, y) + \nabla_y f(x, y), y - x \rangle \geq 0, \quad \forall x, y \in C. \quad (6)$$

f is called *strictly ∇ -monotone on C* if

$$\langle \nabla_x f(x, y) + \nabla_y f(x, y), y - x \rangle > 0, \quad \forall x, y \in C, x \neq y. \quad (7)$$

f is called *strongly ∇ -monotone on C* if there exists $\tau > 0$ such that

$$\langle \nabla_x f(x, y) + \nabla_y f(x, y), y - x \rangle \geq \tau \|y - x\|^2, \quad \forall x, y \in C. \quad (8)$$

Both strict and strong ∇ -monotonicity guarantee that all the stationary points of the reformulations as constrained optimization problems through gap functions are global minima and hence solutions of the equilibrium problem (see [3–5, 29]). Therefore, these conditions have been widely exploited to devise specific descent methods for (EP) : algorithms for the latter case have been provided in [9, 22, 25, 29], while algorithms for the former in [5, 11, 29]. On the contrary, ∇ -monotonicity does not guarantee the above “stationarity property” (see [3]), and no algorithm is yet available for this case. Anyway, when this property is not satisfied, some algorithms have been developed relying on the following condition [3, 4].

Definition 2.5 f is called *c -monotone on C* if

$$f(x, y) + \langle \nabla_x f(x, y), y - x \rangle \geq 0, \quad \forall x, y \in C. \quad (9)$$

If $f(\cdot, y)$ is concave for all $y \in C$, then (9) holds. As a consequence, it is often referred to as a concavity-type condition.

Yet another kind of monotonicity comes into play when reformulations of (EP) as unconstrained optimization problems through D-gap functions are exploited to devise descent algorithms.

Definition 2.6 f is called ∇_{xy} -monotone on C if the mapping $\nabla_x f(x, \cdot)$ is monotone for any $x \in C$, that is

$$\langle \nabla_x f(x, y) - \nabla_x f(x, z), y - z \rangle \geq 0, \quad \forall x, y, z \in C. \quad (10)$$

f is called *strictly* ∇_{xy} -monotone on C if the mapping $\nabla_x f(x, \cdot)$ is strictly monotone for any $x \in C$, that is

$$\langle \nabla_x f(x, y) - \nabla_x f(x, z), y - z \rangle > 0, \quad \forall x, y, z \in C, y \neq z. \quad (11)$$

f is called *strongly* ∇_{xy} -monotone on C if the mappings $\nabla_x f(x, \cdot)$ are strongly monotone uniformly with respect to $x \in C$, that is, there exists $\tau > 0$ such that

$$\langle \nabla_x f(x, y) - \nabla_x f(x, z), y - z \rangle \geq \tau \|y - z\|^2, \quad \forall x, y, z \in C. \quad (12)$$

Both strict and strong ∇_{xy} -monotonicity guarantee that all the stationary points of a D-gap function are global minima and hence solutions of the equilibrium problem [44]. Specific descent methods have been developed exploiting both the former [45, 46] and the latter condition [10, 23, 45], while ∇_{xy} -monotonicity, which does not guarantee the above property, has been exploited up to now only in [6].

3. Relations between monotonicity conditions

The twelve monotonicity conditions introduced in the previous section can be grouped into 3 families: Definitions 2.2 and 2.3 provide the most well-known conditions, Definitions 2.4 and 2.5 collect those conditions which are exploited by methods based on gap functions, while Definition 2.6 brings together those conditions which are exploited by methods based on D-gap functions. In the following they will be often referred to as the first, the second and the third family, respectively.

Inside each family some relationships are straightforward, thus they are not discussed explicitly. The following collection of results outlines some further non trivial relations between the twelve conditions.

THEOREM 3.1 *Given any convex set $C \subseteq \mathbb{R}^n$, the following statements hold:*

- a) *if f is strongly ∇_{xy} -monotone on C , then f is strongly ∇ -monotone on C ;*
- b) *if f is strongly ∇_{xy} -monotone on C , then f is strongly monotone on C ;*
- c) *if f is strictly ∇_{xy} -monotone on C , then f is strictly ∇ -monotone on C ;*
- d) *if f is strictly ∇_{xy} -monotone on C , then f is strictly monotone on C ;*
- e) *if f is ∇_{xy} -monotone on C , then f is c -monotone on C ;*
- f) *if f is ∇_{xy} -monotone on C , then f is monotone on C ;*
- g) *if f is c -monotone on C , then f is ∇ -monotone on C .*

Proof.

- a) Since $f(x, \cdot)$ is convex for any $x \in C$, the mapping $\nabla_y f(x, \cdot)$ is monotone on C .

Therefore, the strong monotonicity of $\nabla_x f(x, \cdot)$ implies

$$\langle \nabla_x f(x, y) + \nabla_y f(x, y) - \nabla_x f(x, x) - \nabla_y f(x, x), y - x \rangle \geq \tau \|y - x\|^2$$

for all $x, y \in C$, i.e., the mapping $\nabla_x f(x, \cdot) + \nabla_y f(x, \cdot)$ is strongly monotone on C .

On the other hand, $\nabla_x f(x, x) + \nabla_y f(x, x) = 0$ since $f(x, x) = 0$ holds for all $x \in C$. Thus,

$$\langle \nabla_x f(x, y) + \nabla_y f(x, y), y - x \rangle \geq \tau \|y - x\|^2, \quad \forall x, y \in C,$$

i.e., f is strongly ∇ -monotone.

b) Given any $x, y \in C$, consider the function

$$g(t) := f(x + t(y - x), x) - f(x + t(y - x), y)$$

for $t \in [0, 1]$. Since f is continuously differentiable, g has a derivative and

$$g'(t) = [\nabla_x f(x + t(y - x), x) - \nabla_x f(x + t(y - x), y)](y - x) \leq -\tau \|y - x\|^2$$

for all $t \in [0, 1]$, where the inequality follows from the strong ∇_{xy} -monotonicity of f . Therefore,

$$g(1) - g(0) = \int_0^1 g'(t) dt \leq -\tau \|y - x\|^2,$$

while also

$$g(1) - g(0) = f(y, x) - f(y, y) - f(x, x) + f(x, y) = f(x, y) + f(y, x).$$

Thus, f is strongly monotone.

c) The proof is analogous to a).

d) The proof is analogous to b).

e) Given any $x, y \in C$, the ∇_{xy} -monotonicity of f guarantees

$$\langle \nabla_x f(x, y) - \nabla_x f(x, x), y - x \rangle \geq 0.$$

Moreover, $\nabla_x f(x, x) + \nabla_y f(x, x) = 0$ since $f(x, x) = 0$ holds for any $x \in C$, while

$$f(x, y) \geq f(x, x) + \langle \nabla_y f(x, x), y - x \rangle = \langle \nabla_y f(x, x), y - x \rangle$$

follows from the convexity of the function $f(x, \cdot)$. As a consequence,

$$\begin{aligned} f(x, y) + \langle \nabla_x f(x, y), y - x \rangle &\geq f(x, y) + \langle \nabla_x f(x, x), y - x \rangle \\ &= f(x, y) - \langle \nabla_y f(x, x), y - x \rangle \geq 0, \end{aligned}$$

and therefore f is c-monotone.

f) The proof is similar to b).

g) (see also [3, Theorem 3.1]). Since $f(x, \cdot)$ is convex, then

$$0 = f(x, x) \geq f(x, y) + \langle \nabla_y f(x, y), x - y \rangle$$

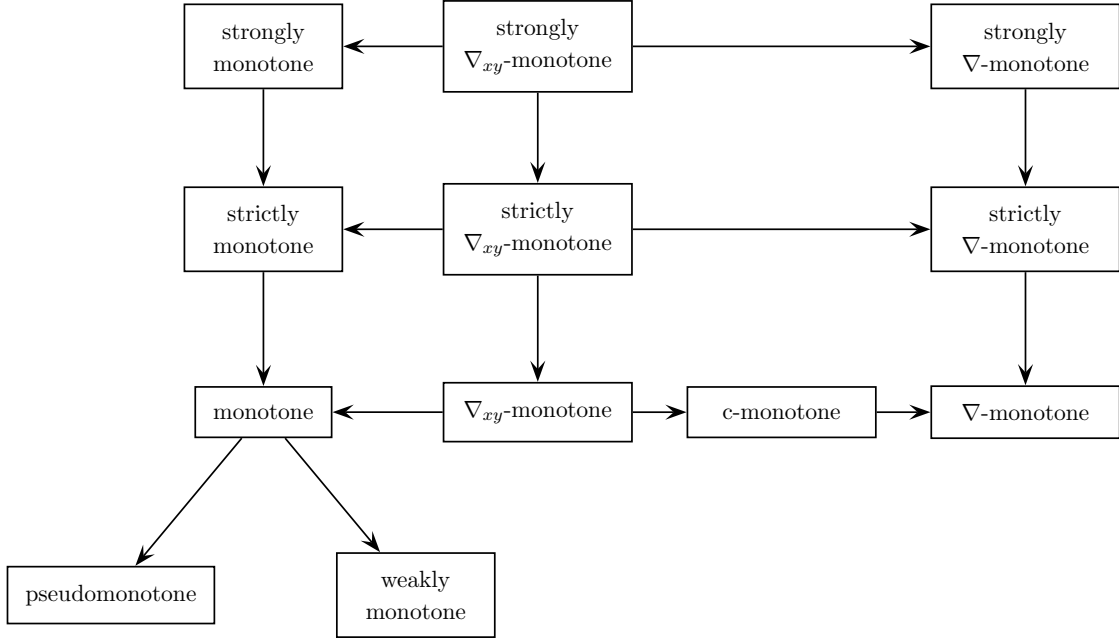


Figure 1. Relationships between monotonicity conditions: the general case.

holds for any $x, y \in C$. The above inequality and the c-monotonicity of f guarantee

$$\begin{aligned} & \langle \nabla_x f(x, y) + \nabla_y f(x, y), y - x \rangle = \\ & = (f(x, y) + \langle \nabla_x f(x, y), y - x \rangle) - (f(x, y) + \langle \nabla_y f(x, y), x - y \rangle) \geq 0, \end{aligned}$$

and thus f is ∇ -monotone. ■

Figure 1 depicts the relationships between the twelve monotonicity conditions. Note that the monotonicity conditions of the third family, that is the family related to D-gap functions, imply the corresponding conditions of the two other families.

The following counterexamples show that no further relation holds between the above conditions. To begin with, the next example shows that no condition belonging to the first family implies any condition of the other two families.

Example 3.2 Let $C = \mathbb{R}$ and $f(x, y) = e^{x^2}(y^2 - x^2) + x(y - x)$. Then, f is strongly monotone since

$$f(x, y) + f(y, x) = (e^{x^2} - e^{y^2})(y^2 - x^2) - (y - x)^2 \leq -(y - x)^2 \quad \forall x, y \in C,$$

but it is not ∇ -monotone since

$$\langle \nabla_x f(x, y) + \nabla_y f(x, y), y - x \rangle = (y - x)^2 [2e^{x^2}(x^2 + xy + 1) + 1],$$

which is negative for $x = 1$ and $y = -3$.

Hence, f is strongly monotone, strictly monotone, monotone, pseudomonotone and weakly monotone, but it does not satisfies any of the other seven conditions.

The following four examples show that only the obvious relationships hold between the conditions of the first family.

Example 3.3 Let $C = \mathbb{R}$ and $f(x, y) = x^3(y - x)$. Since

$$f(x, y) + f(y, x) = (x^3 - y^3)(y - x) < 0, \quad \forall x, y \in \mathbb{R} \text{ s.t. } x \neq y,$$

f is strictly monotone. On the other hand, it is not strongly monotone since

$$[f(x, y) + f(y, x)]/(y - x)^2 = -(x^2 + xy + y^2) \rightarrow 0$$

if $x \rightarrow 0$ and $y \rightarrow 0$.

Example 3.4 Let $C = \mathbb{R}$ and $f(x, y) = x - y$. Since

$$f(x, y) + f(y, x) = 0$$

holds for any $x, y \in \mathbb{R}$, f is monotone but not strictly monotone. Furthermore, f is ∇_{xy} -monotone since

$$\nabla_x f(x, y) - \nabla_x f(x, z) = 0$$

holds for any $x, y, z \in \mathbb{R}$. Hence, it is also c-monotone and ∇ -monotone. On the other hand, it is not strictly ∇ -monotone since

$$\nabla_x f(x, y) + \nabla_y f(x, y) = 0$$

holds for any $x, y \in \mathbb{R}$. Hence, f is ∇_{xy} -monotone, ∇ -monotone, c-monotone, monotone, pseudomonotone and weakly monotone, but it does not satisfies any of the other six conditions.

Example 3.5 Let $C = \mathbb{R}$ and $f(x, y) = (x^2 + 1)(y - x)$. then, f is pseudomonotone since

$$f(x, y) \geq 0 \implies y \geq x \implies f(y, x) \leq 0,$$

but it is not weakly monotone since

$$[f(x, y) + f(y, x)]/(y - x)^2 = -(x + y) \rightarrow +\infty$$

if, for instance, $x \rightarrow -\infty$ and $y = 0$. As a consequence, it is not monotone, strictly and strongly monotone as well.

Example 3.6 Let $C = \mathbb{R}$ and $f(x, y) = -x^2 - xy + 2y^2$. Then, f is weakly monotone since

$$f(x, y) + f(y, x) = (y - x)^2,$$

but is not pseudomonotone since $f(2, -1) = 0$ and $f(-1, 2) = 9$. Furthermore, f is c-monotone since

$$f(x, y) + \langle \nabla_x f(x, y), y - x \rangle = -x^2 - xy + 2y^2 + (-2x - y)(y - x) = (x - y)^2 \geq 0,$$

and it is strongly ∇ -monotone since

$$\langle \nabla_x f(x, y) + \nabla_y f(x, y), y - x \rangle = 3(y - x)^2.$$

Hence, f is strongly ∇ -monotone, strictly ∇ -monotone, ∇ -monotone, c-monotone and weakly monotone, but it does not satisfies any of the other seven conditions.

The following two examples, together with Example 3.6, show that no further relation holds between the conditions of the second family and those of the other two families.

Example 3.7 Let $C = \mathbb{R}$ and $f(x, y) = (y-x)^4 + x(y-x)$. Then, f is strongly ∇ -monotone since

$$\langle \nabla_x f(x, y) + \nabla_y f(x, y), y - x \rangle = (y - x)^2.$$

Thus, it is both strictly ∇ -monotone and ∇ -monotone as well. However, f is not weakly monotone since

$$[f(x, y) + f(y, x)]/(y - x)^2 = 2(y - x)^2 - 1 \rightarrow +\infty$$

if, for instance, $x = 0$ and $y \rightarrow +\infty$.

Example 3.8 Let $C = [0, +\infty)$ and $f(x, y) = (y - x)^4 + 3(y^4 - x^4)$. The concavity-type condition (9) reads

$$f(x, y) + \langle \nabla_x f(x, y), y - x \rangle = 6x(x^3 + 2y^3 - 3xy^2).$$

If $x = 0$ and $y \in C$ then the above right-hand side is 0. On the other hand, if $x > 0$ and $y \in C$, then there exists $\alpha \geq 0$ such that $y = \alpha x$ so that

$$f(x, y) + \langle \nabla_x f(x, y), y - x \rangle = 6x^4(2\alpha^3 - 3\alpha^2 + 1)$$

which is non-negative since $2\alpha^3 - 3\alpha^2 + 1 \geq 0$ for all $\alpha \geq 0$. Therefore, f is c-monotone.

However, f is not weakly monotone since

$$[f(x, y) + f(y, x)]/(y - x)^2 = 2(y - x)^2 \rightarrow +\infty$$

if, for instance, $x = 0$ and $y \rightarrow +\infty$.

The following counterexample, paired with Examples 3.4 and 3.8, shows that no further relation holds between the conditions of the second family.

Example 3.9 Let $C = \mathbb{R}$ and $f(x, y) = x^2 - 3xy + 2y^2$. Then, f is strongly ∇ -monotone since

$$\langle \nabla_x f(x, y) + \nabla_y f(x, y), y - x \rangle = (y - x)^2.$$

Thus, it is both strictly ∇ -monotone and ∇ -monotone as well. However, it is not c-monotone since

$$f(x, y) + \langle \nabla_x f(x, y), y - x \rangle = x^2 - 3xy + 2y^2 + (2x - 3y)(y - x) = -(y - x)^2 < 0$$

for any pair $x, y \in C$ with $x \neq y$.

Note that Example 3.4 shows also that no further relation involving ∇_{xy} -monotonicity holds beyond those provided by Theorem 3.1. The following example provides an analogous result for strict ∇_{xy} -monotonicity.

Example 3.10 Let $C = \mathbb{R}$ and $f(x, y) = e^x(y - x)$. Since

$$\langle \nabla_x f(x, y) - \nabla_x f(x, z), y - z \rangle = e^x(y - z)^2,$$

f is strictly ∇_{xy} -monotone but not strongly ∇_{xy} -monotone. Furthermore, f is neither strongly ∇ -monotone nor strongly monotone since

$$\langle \nabla_x f(x, y) + \nabla_y f(x, y), y - x \rangle / (y - x)^2 = e^x \rightarrow 0$$

if $x \rightarrow -\infty$, and

$$[f(x, y) + f(y, x)] / (y - x)^2 = (e^x - e^y)(y - x) / (y - x)^2 \rightarrow 0$$

if, for instance, $y = x + 1$ and $x \rightarrow -\infty$.

Table 1 summarizes all the relationships between the twelve monotonicity conditions.

4. Particular cases

In this section two particular cases of (EP) are studied: variational inequalities and linear equilibrium problems. In both cases some further relationships between monotonicity conditions hold beyond those already given by Theorem 3.1.

4.1 Variational inequalities

Consider (EP) with

$$f(x, y) = \langle F(x), y - x \rangle$$

for some continuously differentiable mapping $F : \mathbb{R}^n \rightarrow \mathbb{R}^n$. Since the first family of monotonicity conditions for f (Definitions 2.2 and 2.3) is built relying on the similarity with variational inequalities, they obviously collapse to the corresponding monotonicity conditions for F . Furthermore, the core formulas for the other two families read

$$\langle \nabla_x f(x, y) + \nabla_y f(x, y), y - x \rangle = f(x, y) + \langle \nabla_x f(x, y), y - x \rangle = \langle y - x, \nabla F(x)(y - x) \rangle,$$

and

$$\langle \nabla_x f(x, y) - \nabla_x f(x, z), y - z \rangle = \langle y - z, \nabla F(x)(y - z) \rangle.$$

Therefore, the monotonicity, c -monotonicity, ∇ -monotonicity and ∇_{xy} -monotonicity of f coincide with the monotonicity of F (see [42, Proposition 12.3]). The analogous equivalences hold also for strong monotonicity conditions. On the contrary, the strict monotonicity conditions are all different: strict ∇_{xy} -monotonicity implies strict ∇ -monotonicity, which in turn implies strict monotonicity, while both the reverse implications do not hold as shown by Example 3.3 for the latter and by the example below for the former.

Example 4.1 Let $C = \mathbb{R}_+^2$ and $F(x_1, x_2) = (x_1 + x_2 + x_1^2, x_1 + x_2 + x_2^2)$. The matrix

$$\nabla F(x) = \begin{pmatrix} 1 + 2x_1 & 1 \\ 1 & 1 + 2x_2 \end{pmatrix}$$

is positive definite for any $x \neq 0$. Thus, if $x \neq 0$, then the inequality

$$\langle y - x, \nabla F(x)(y - x) \rangle > 0$$

Table 1. Relationships between monotonicity conditions.

\Rightarrow	strongly monotone	strictly monotone	monotone	pseudo monotone	weakly monotone	strongly ∇ -monotone	strictly ∇ -monotone	∇ -monotone	c-monotone	strongly ∇_{xy} -monotone	strictly ∇_{xy} -monotone	∇_{xy} -monotone
strongly monotone	–	yes	yes	yes	yes	(Ex. 3.2)	no (Ex. 3.2)	no (Ex. 3.2)	no (Ex. 3.2)	no (Ex. 3.2)	no (Ex. 3.2)	no (Ex. 3.2)
strictly monotone	no (Ex. 3.3)	–	yes	yes	yes	(Ex. 3.2)	no (Ex. 3.2)	no (Ex. 3.2)	no (Ex. 3.2)	no (Ex. 3.2)	no (Ex. 3.2)	no (Ex. 3.2)
monotone	no (Ex. 3.4)	no (Ex. 3.4)	–	yes	yes	(Ex. 3.2)	no (Ex. 3.2)	no (Ex. 3.2)	no (Ex. 3.2)	no (Ex. 3.2)	no (Ex. 3.2)	no (Ex. 3.2)
pseudomonotone	no (Ex. 3.5)	no (Ex. 3.5)	no (Ex. 3.5)	–	no (Ex. 3.5)	(Ex. 3.2)	no (Ex. 3.2)	no (Ex. 3.2)	no (Ex. 3.2)	no (Ex. 3.2)	no (Ex. 3.2)	no (Ex. 3.2)
weakly monotone	no (Ex. 3.6)	no (Ex. 3.6)	no (Ex. 3.6)	no (Ex. 3.6)	–	(Ex. 3.2)	no (Ex. 3.2)	no (Ex. 3.2)	no (Ex. 3.2)	no (Ex. 3.2)	no (Ex. 3.2)	no (Ex. 3.2)
strongly ∇ -monotone	no (Ex. 3.6)	no (Ex. 3.6)	no (Ex. 3.6)	no (Ex. 3.6)	no (Ex. 3.7)	–	yes	yes	no (Ex. 3.9)	no (Ex. 3.6)	no (Ex. 3.6)	no (Ex. 3.6)
strictly ∇ -monotone	no (Ex. 3.6)	no (Ex. 3.6)	no (Ex. 3.6)	no (Ex. 3.6)	no (Ex. 3.7)	no (Ex. 3.8)	–	yes	no (Ex. 3.9)	no (Ex. 3.6)	no (Ex. 3.6)	no (Ex. 3.6)
∇ -monotone	no (Ex. 3.6)	no (Ex. 3.6)	no (Ex. 3.6)	no (Ex. 3.6)	no (Ex. 3.7)	no (Ex. 3.8)	no (Ex. 3.4)	–	no (Ex. 3.9)	no (Ex. 3.6)	no (Ex. 3.6)	no (Ex. 3.6)
c-monotone	no (Ex. 3.6)	no (Ex. 3.6)	no (Ex. 3.6)	no (Ex. 3.6)	no (Ex. 3.8)	no (Ex. 3.8)	no (Ex. 3.4)	yes	–	no (Ex. 3.6)	no (Ex. 3.6)	no (Ex. 3.6)
strongly ∇_{xy} -monotone	yes	yes	yes	yes	yes	yes	yes	yes	yes	–	yes	yes
strictly ∇_{xy} -monotone	no (Ex. 3.10)	yes	yes	yes	yes	no (Ex. 3.10)	yes	yes	yes	no (Ex. 3.10)	–	yes
∇_{xy} -monotone	no (Ex. 3.4)	no (Ex. 3.4)	yes	yes	yes	no (Ex. 3.4)	no (Ex. 3.4)	yes	yes	no (Ex. 3.4)	no (Ex. 3.4)	–

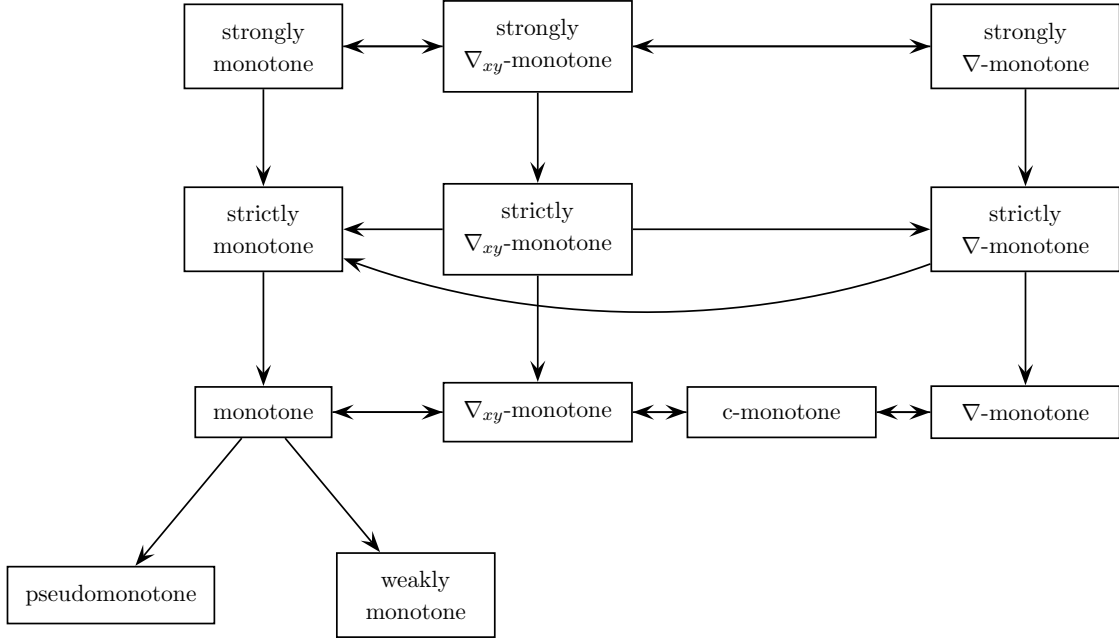


Figure 2. Relationships between monotonicity conditions: variational inequalities.

holds for any $x, y \in C$ satisfying $y \neq x$. Moreover, $x = 0$ implies

$$\langle y - x, \nabla F(x)(y - x) \rangle = \langle y, \nabla F(0)y \rangle = (y_1 + y_2)^2 > 0$$

for any $y \in C$ with $y \neq x$. Therefore, f is strictly ∇ -monotone. On the contrary, f is not strictly ∇_{xy} -monotone since $x = 0$, $y = (1, 0)$ and $z = (0, 1)$ provide

$$\langle y - z, \nabla F(x)(y - z) \rangle = 0.$$

Figure 2 shows how the twelve monotonicity conditions collapses to seven in the case of variational inequalities.

4.2 Linear equilibrium problems

Consider the so-called linear equilibrium problem [40], that is (EP) with

$$f(x, y) = \langle Px + Qy + r, y - x \rangle \quad (13)$$

for some $r \in \mathbb{R}^n$ and some $P, Q \in \mathbb{R}^{n \times n}$, where Q is positive semidefinite (in order to guarantee that $f(x, \cdot)$ is convex). In this case the core formulas read

$$\langle \nabla_x f(x, y) - \nabla_x f(x, z), y - z \rangle = \langle y - z, (P^T - Q)(y - z) \rangle = \langle y - z, (P - Q)(y - z) \rangle,$$

$$f(x, y) + f(y, x) = -\langle y - x, (P - Q)(y - x) \rangle,$$

$$f(x, y) + \langle \nabla_x f(x, y), y - x \rangle = \langle y - x, P(y - x) \rangle,$$

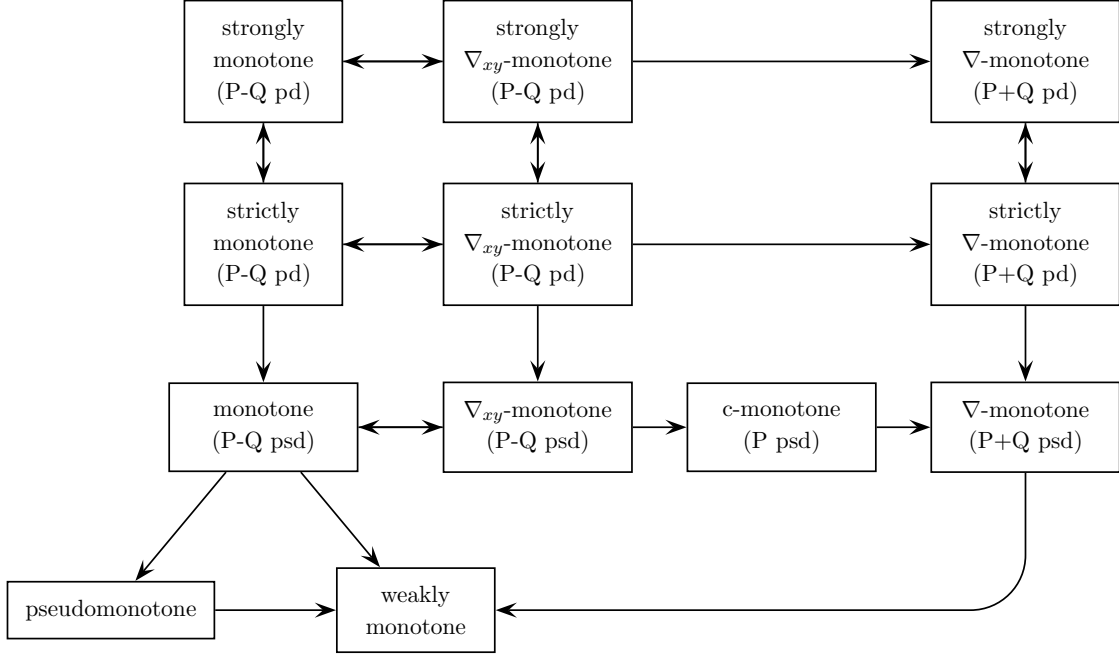


Figure 3. Relationships between monotonicity conditions: linear equilibria.

and

$$\langle \nabla_x f(x, y) + \nabla_y f(x, y), y - x \rangle = \langle y - x, (P + Q)(y - x) \rangle.$$

Hence, f is monotone and ∇_{xy} -monotone if the matrix $P - Q$ is positive semidefinite (shortly, psd), it is c-monotone if P is psd and ∇ -monotone if $P + Q$ is psd.

Note that monotonicity coincides with ∇_{xy} -monotonicity, but they are not equivalent to either c-monotonicity or ∇ -monotonicity as it happens in the case of variational inequalities. Analogous relations hold also for strong monotonicity conditions. Furthermore, strong ∇_{xy} -monotonicity (∇ -monotonicity) is equivalent to strict ∇_{xy} -monotonicity (∇ -monotonicity). Finally, weak monotonicity is always satisfied with $\tau = \|P - Q\|$, but it is not equivalent to pseudomonotonicity (see Example 3.6).

Figure 3 shows how the twelve monotonicity conditions collapses to seven in the case of linear equilibrium problems.

Nash equilibrium problems in noncooperative games with quadratic cost functions are an interesting particular case of linear equilibrium problems: each player i has a set of feasible strategies $K_i \subseteq \mathbb{R}^{n_i}$ and aims at minimizing a quadratic cost function which depends also on the strategies on the other players, namely

$$c_i(x) = \frac{1}{2} \langle x_i, A_{ii}x_i \rangle + \sum_{\substack{j=1 \\ j \neq i}}^N \langle x_i, A_{ij}x_j \rangle + \langle b_i, x_i \rangle,$$

where N denotes the number of players, $x \in K_1 \times \cdots \times K_N$ and the squared matrices A_{11}, \dots, A_{NN} are symmetric and positive semidefinite. Finding a Nash equilibrium amounts to solving (EP) with $C = K_1 \times \cdots \times K_N$ and the Nikaido-Isoda aggregate

bifunction

$$f(x, y) = \sum_{i=1}^N [c_i(x) - c_i(x(y_i))]$$

where $x(y_i)$ denotes the vector obtained from x replacing x_i by y_i [37]. This bifunction can be written in the form (13) just setting

$$P = \begin{pmatrix} A_{11}/2 & A_{12} & \dots & A_{1N} \\ A_{21} & A_{22}/2 & \dots & A_{2N} \\ \vdots & \vdots & \ddots & \vdots \\ A_{N1} & A_{N2} & \dots & A_{NN}/2 \end{pmatrix}, \quad Q = \begin{pmatrix} A_{11}/2 & 0 & \dots & 0 \\ 0 & A_{22}/2 & \ddots & \vdots \\ \vdots & \ddots & \ddots & 0 \\ 0 & \dots & 0 & A_{NN}/2 \end{pmatrix}, \quad (14)$$

and $r = (b_1, \dots, b_N)^T$. Hence, it is monotone if $A_{ij} = -A_{ji}^T$ for any $i, j = 1, \dots, N$; it is c-monotone if the matrix P in (14) is psd and ∇ -monotone if the block matrix $A = (A_{ij})$ is psd.

5. Conclusions

Twelve monotonicity conditions, which are relevant in the algorithms for (EP) , have been analysed. They include the most widespread definitions of monotonicity and some further conditions, which have been introduced in order to guarantee the convergence of descent methods based on gap or D-gap functions. All the relations between the twelve conditions have been identified.

Furthermore, two particular cases have been examined: variational inequalities and linear equilibrium problems. In both cases the twelve kinds of monotonicity collapse to seven different conditions. Anyway, the additional relationships are not all the same in the two cases: indeed, just two are common to both, while the other four of the first case are different from the other six of the second case.

Finally, it is worth stressing that almost all the algorithms for (EP) involve some further assumptions in addition to monotonicity. Thus, the relationships between monotonicity conditions are very useful to compare convergence results, but alone they are not enough to make full comparisons.

References

- [1] P.N. Anh, *A logarithmic quadratic regularization method for solving pseudomonotone equilibrium problems*, Acta Math. Vietnam. 34 (2009), pp. 183–200.
- [2] P.N. Anh and J.K. Kim, *Outer approximation algorithms for pseudomonotone equilibrium problems*, Comput. Math. Appl. 61 (2011), pp. 2588–2595.
- [3] G. Bigi, M. Castellani, and M. Pappalardo, *A new solution method for equilibrium problems*, Optim. Methods Softw. 24 (2009), pp. 895–911.
- [4] G. Bigi and M. Passacantando, *Gap functions and penalization for solving equilibrium problems with nonlinear constraints*, Comput. Optim. Appl. 53 (2012), pp. 323–346.
- [5] G. Bigi and M. Passacantando, *Descent and penalization techniques for equilibrium problems with nonlinear constraints*, J. Optim. Theory Appl. (2013), to appear.
- [6] G. Bigi and M. Passacantando, *D-gap functions and descent techniques for solving equilibrium problems*, Technical Report TR-13-15, Dipartimento di Informatica, Università di Pisa, 2013.
- [7] G. Bigi, M. Castellani, M. Pappalardo, and M. Passacantando, *Existence and solution methods for equilibria*, European J. Oper. Res. 227 (2013), pp. 1–11.

- [8] E. Blum and W. Oettli, *From optimization and variational inequalities to equilibrium problems*, Math. Stud. 63 (1994), pp. 123–145.
- [9] O. Chadli, I.V. Konnov, and J.-C. Yao, *Descent methods for equilibrium problems in a Banach space*, Comput. Math. Appl. 48 (2004), pp. 609–616.
- [10] C. Cherugondi, *A note on D-gap functions for equilibrium problems*, Optimization, 62 (2013), pp. 211–226.
- [11] D. Di Lorenzo, M. Passacantando, and M. Sciandrone, *A convergent inexact solution method for equilibrium problems*, Optim. Methods Softw. (2013), doi: 10.1080/10556788.2013.796376.
- [12] F. Facchinei and J.-S. Pang, *Finite-dimensional variational inequalities and complementarity problems*, Springer-Verlag, New York, 2003.
- [13] S.D. Flåm and A.S. Antipin, *Equilibrium programming using proximal-like algorithms*, Math. Program. 78 (1997), pp. 29–41.
- [14] A.N. Iusem and M. Nasri, *Inexact Proximal Point Methods for Equilibrium Problems in Banach Spaces*, Numer. Funct. Anal. Optim. 28 (2007), pp. 1279–1308.
- [15] A.N. Iusem and W. Sosa, *Iterative algorithms for equilibrium problems*, Optimization 52 (2003), pp. 301–316.
- [16] A.N. Iusem and W. Sosa, *On the proximal point method for equilibrium problems in Hilbert spaces*, Optimization 59 (2010), pp. 1259–1274.
- [17] I.V. Konnov, *Combined relaxation method for monotone equilibrium problems*, J. Optim. Theory Appl. 111 (2001), pp. 327–340.
- [18] I.V. Konnov, *Application of the proximal point method to nonmonotone equilibrium problems*, J. Optim. Theory Appl. 119 (2003), pp. 317–333.
- [19] I.V. Konnov, *Partial regularization method for equilibrium problems*, J. Nonlinear Convex Anal. 6 (2005), pp. 497–503.
- [20] I.V. Konnov, *Partial proximal point method for nonmonotone equilibrium problems*, Optim. Methods Softw. 21 (2006), pp. 373–384.
- [21] I.V. Konnov and M.S.S. Ali, *Descent methods for monotone equilibrium problems in Banach spaces*, J. Comput. Appl. Math. 188 (2006), pp. 165–179.
- [22] I.V. Konnov and O.V. Pinyagina, *Descent method with respect to the gap function for nonsmooth equilibrium problems*, Russian Math. 47 (2003), pp. 67–73.
- [23] I.V. Konnov and O.V. Pinyagina, *D-gap functions for a class of equilibrium problems in Banach spaces*, Comput. Methods Appl. Math. 3 (2003), pp. 274–286.
- [24] I.V. Konnov and O.V. Pinyagina, *D-gap functions and descent methods for a class of monotone equilibrium problems*, Lobachevskii J. Math. 13 (2003), pp. 57–65.
- [25] I.V. Konnov and O.V. Pinyagina, *A descent method with inexact linear search for nonsmooth equilibrium problems*, Comput. Math. Math. Phys. 48 (2008), pp. 1777–1783.
- [26] I.V. Konnov, S. Schaible, and J.-C. Yao, *Combined relaxation method for mixed equilibrium problems*, J. Optim. Theory Appl. 126 (2005), pp. 309–322.
- [27] J. Mashreghia and M. Nasri, *Strong convergence of an inexact proximal point algorithm for equilibrium problems in Banach spaces*, Numer. Funct. Anal. Optim. 31 (2010), pp. 1053–1071.
- [28] G. Mastroeni, *On auxiliary principle for equilibrium problems*, in *Equilibrium Problems and Variational Models*, P. Daniele, F. Giannessi, and A. Maugeri, eds., Kluwer Academic Publishers, Norwell, 2003, pp. 289–298.
- [29] G. Mastroeni, *Gap functions for equilibrium problems*, J. Global Optim. 27 (2003), pp. 411–426.
- [30] A. Moudafi, *Proximal point methods extended to equilibrium problems*, J. Nat. Geom. 15 (1999), pp. 91–100.
- [31] A. Moudafi, *Second-order differential proximal methods for equilibrium problems*, J. Inequal. Pure Appl. Math. 4 (2003), article no. 18.
- [32] A. Moudafi, *On finite and strong convergence of a proximal method for equilibrium problems*, Numer. Funct. Anal. Optim. 28 (2007), pp. 1347–1354.
- [33] A. Moudafi and M. Théra, *Proximal and dynamical approaches to equilibrium problems*, in *Ill-posed variational problems and regularization techniques*, M. Théra and R. Tichatschke, eds., Springer, Berlin, 1999, pp. 187–201.
- [34] L.D. Muu and T.D. Quoc, *Regularization algorithms for solving monotone Ky Fan inequalities with application to a Nash-Cournot equilibrium model*, J. Optim. Theory Appl. 142 (2009), pp. 185–204.
- [35] T.T.V. Nguyen, J.J. Strodiot, and V.H. Nguyen, *A bundle method for solving equilibrium problems*, Math. Program. 116 (2009), pp. 529–552.
- [36] T.T.V. Nguyen, J.J. Strodiot, and V.H. Nguyen, *The interior proximal extragradient method for solving equilibrium problems*, J. Global Optim. 44 (2009), pp. 175–192.
- [37] H. Nikaido and K. Isoda, *Note on noncooperative convex games*, Pacific J. Math. 5 (1955), pp. 807–815.

- [38] T.D. Quoc, P.N. Anh, and L.D. Muu, *Dual extragradient algorithms extended to equilibrium problems*, J. Global Optim. 52 (2012), pp. 139–159.
- [39] T.D. Quoc, M.L. Dung, and V.H. Nguyen, *Extragradient algorithms extended to equilibrium problems*, Optimization 57 (2008), pp. 749–776.
- [40] T.D. Quoc and L.D. Muu, *Iterative methods for solving monotone equilibrium problems via dual gap functions*, Comput. Optim. Appl. 51 (2012), pp. 709–728.
- [41] F.M.P. Raupp and W. Sosa, *An analytic center cutting plane algorithm for finding equilibrium points*, RAIRO Oper. Res. 40 (2006), pp. 37–52.
- [42] R.T. Rockafellar and R. J-B Wets, *Variational Analysis*, Springer-Verlag, New York, 2009.
- [43] L.C. Zeng and J.C. Yao, *Modified combined relaxation method for general monotone equilibrium problems in Hilbert spaces*, J. Optim. Theory Appl. 131 (2006), pp. 469–483.
- [44] L. Zhang and J.Y. Han, *Unconstrained optimization reformulations of equilibrium problems*, Acta Math. Sin. 25 (2009), pp. 343–354.
- [45] L. Zhang and S.-Y. Wu, *An algorithm based on the generalized D-gap function for equilibrium problems*, J. Comput. Appl. Math. 231 (2009), pp. 403–411.
- [46] L. Zhang, S.-Y. Wu, and S.-C. Fang, *Convergence and error bound of a D-gap function based Newton-type algorithm for equilibrium problems*, J. Ind. Manag. Optim. 6 (2010), pp. 333–346.